



COVID-19 Town Hall: NY's Safety Guidance for the Construction Industry

PRESENTED BY:

Domenique Camacho Moran, Esq.

Friday, May 29, 2020

Disclaimer

The information provided in this presentation does not, and is not intended to, constitute legal advice. This has been prepared for informational purposes and general guidance only and is not intended to be a thorough, in-depth analysis of specific issues. The information contained in this presentation does not constitute professional advice and is not intended to substitute for professional legal advice. Please be advised, the rapidly changing public health crisis has resulted in frequent changes to the legal and regulatory guidance regarding COVID-19 legislation. Information contained in this presentation may not constitute the most up-to-date legal or other information.

IRS Circular 230 Disclosure: To the extent this presentation contains federal tax advice, such advice was not intended to be used, and cannot be used by any taxpayer, for the purpose of (a) avoiding penalties under the Internal Revenue Code or (b) promoting, marketing, or recommending to another party any transaction or matter addressed herein.

NY FORWARD BUSINESS RE-OPENING SAFETY PLAN TEMPLATE

- Business must develop a WRITTEN SAFETY PLAN;
- Plan must be RETAINED on the premises;
- Plan must be AVAILABLE if an inspection; and
- “Responsible Parties” must AFFIRM they have reviewed, understand and will implement the state-issued industry guidelines.

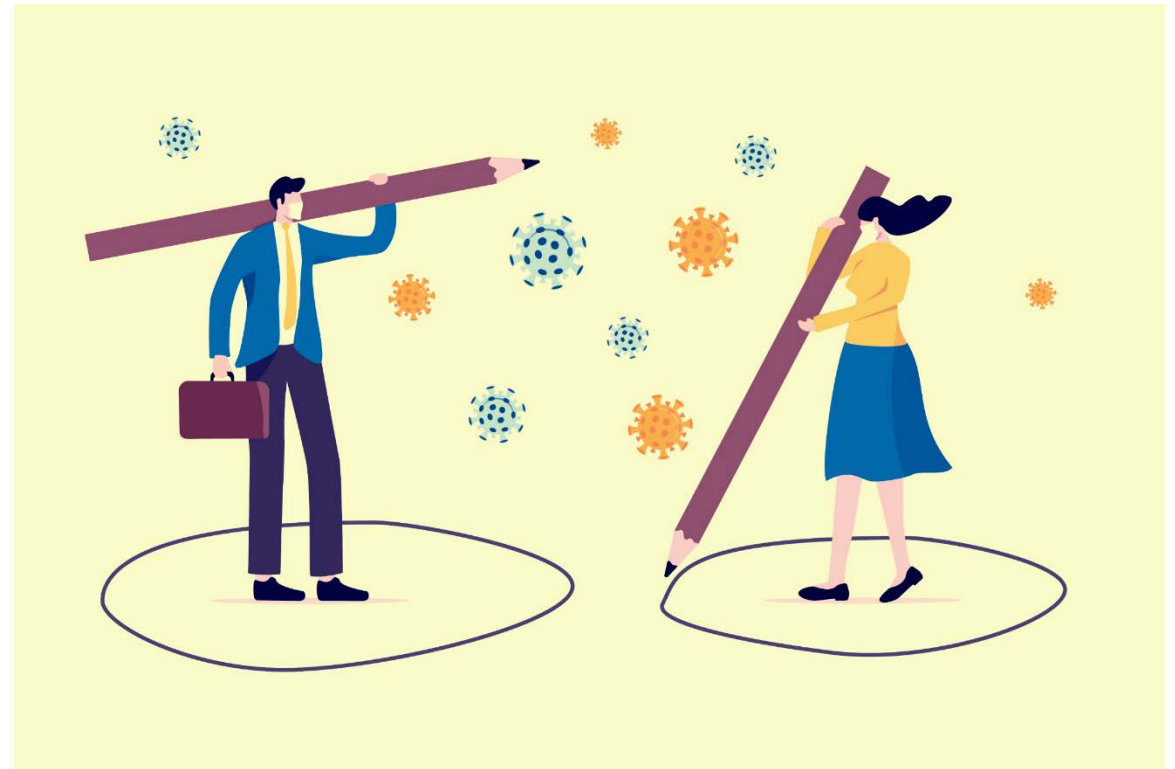
https://www.governor.ny.gov/sites/governor.ny.gov/files/atoms/files/NYS_BusinessReopeningSafetyPlanTemplate.pdf

Components of the Mandated Safety Plan

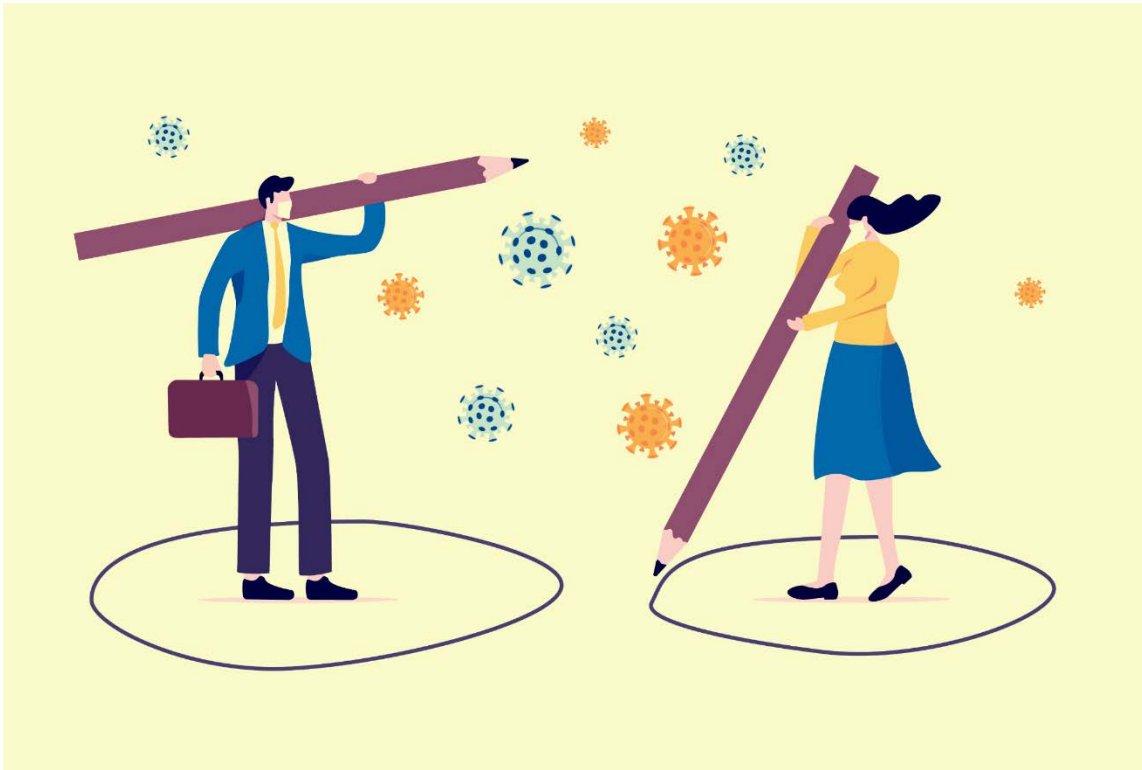
- Industry Specific “Interim Guidance”: Manufacturing, Construction, Retail (Curbside and In-Store Pickup Only), and Wholesale Trade. <https://forward.ny.gov/industries-reopening-phase>
- Designate a Site Safety Monitor
- Plan must address **People**, **Places**, and **Processes**.

Physical Distancing – Mandates

- ❑ Ensure 6' distance between personnel (*unless* safety or core function requires a shorter distance).
- ❑ If personnel are less than 6' apart, face coverings are required.
- ❑ Limit tightly confined spaces to one occupant, *unless* all occupants wear face coverings in which case, limit occupancy to less than 50% maximum capacity.



Physical Distancing – Mandates



- Post social distancing markers in commonly used areas.
- Limit in-person gatherings. If essential, hold meetings in open, well-ventilated spaces with appropriate social distancing.
- Establish designated areas for pick-ups and deliveries. Limit contact.

Physical Distancing Mandates – Industry Specific

- ❑ **Manufacturing**: Limit workforce to 50% maximum occupancy – excluding supervisors. If work requires additional employees, adopt additional mitigation strategies (*e.g.*, face coverings at all times).
- ❑ **Construction**: One (1) worker per 250 sq. ft. (on site) – excluding supervisors. If work requires additional employees, adopt additional mitigation strategies (*e.g.*, face coverings at all times).
- ❑ **Retail**: Total number of employees and customers in establishment cannot exceed 50% maximum occupancy. Customers must be 6’ and wear face coverings. If less than 6’ without barrier, must wear face coverings.

Physical Distancing – Recommended

- ❑ Density Reduction: Stagger Work Hours, Alternating Days or Shifts
- ❑ Workplace Layout: Distance Work Stations, Erect Barriers, Avoid Multiple Crews or Teams in same area.
- ❑ Prohibit non-essential visitors.



Protective Equipment

- Employer must:
 - Provide acceptable face coverings at no-cost and maintain an adequate supply.
 - Allow for individual masks (consider “branding”).
 - Educate: masks must be cleaned, cannot be shared and properly discarded.
- When shared objects or frequently touched areas, wear gloves (employer-provided) **or** sanitize hands before and after use.



Hygiene and Cleaning



- ❑ “Adhere” to CDC and DOH sanitation requirements.
- ❑ Maintain cleaning logs on site that document date, time and scope of cleaning.
- ❑ Provide hand hygiene stations – either handwashing with soap, water, and paper towels or alcohol-based sanitizer if handwashing is not feasible.
- ❑ Cleaning and disinfecting every day and more frequent cleaning and disinfecting of shared or frequently touched surfaces.

Hygiene and Cleaning

- ❑ Provide gloves if cleaning or disinfection products cause safety hazards.
- ❑ Prohibit shared food and beverages.
- ❑ Retail: Gloves while handling food products and sanitize hands before and after transferring “a load of merchandise.”



Communication

- AFFIRM** you have reviewed and understand the state-issued industry guidelines, and that you will implement them.
- Post signs re: proper hygiene, social distancing rules, PPE, and cleaning and disinfecting protocols.
- Communication plan for employees, visitors, and clients (**not customers**).

Communication

- Maintain log of employees, visitors, and clients (not customers) who may have close contact with others in the workplace.
- Train personnel and frequently communicate guidelines.
- Post safety plan on site.



Employee Health Screenings

- Employees who are sick should stay home or go home.
- Implement **daily** mandatory health screening before employees begin work. Temperature screening is permitted, not required.
- COVID-19 “Symptoms”
 - Fever, cough, shortness of breath; or
 - 2 of the following: fever, chills, repeated shaking with chills, muscle pain, headache, sore throat, or new loss of taste or smell.

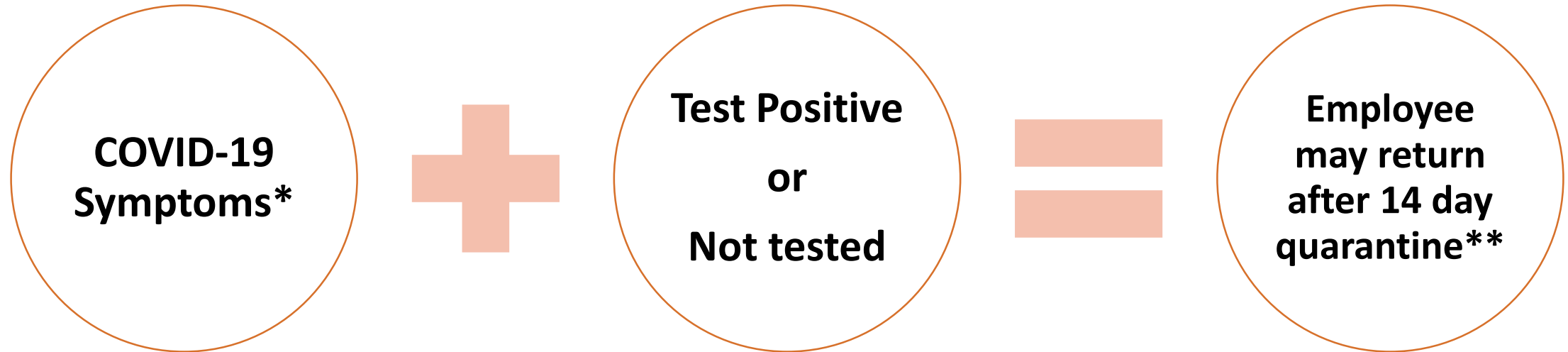
Employee Health Screenings

Employee Questionnaire:

- Has employee been in close or proximate contact in the past 14 days with someone who has tested COVID 19+ or who has had symptoms of COVID-19?
- Has employee tested COVID-19+ in the past 14 days?
- Has employee experienced any symptoms of COVID-19 in the past 14 days?



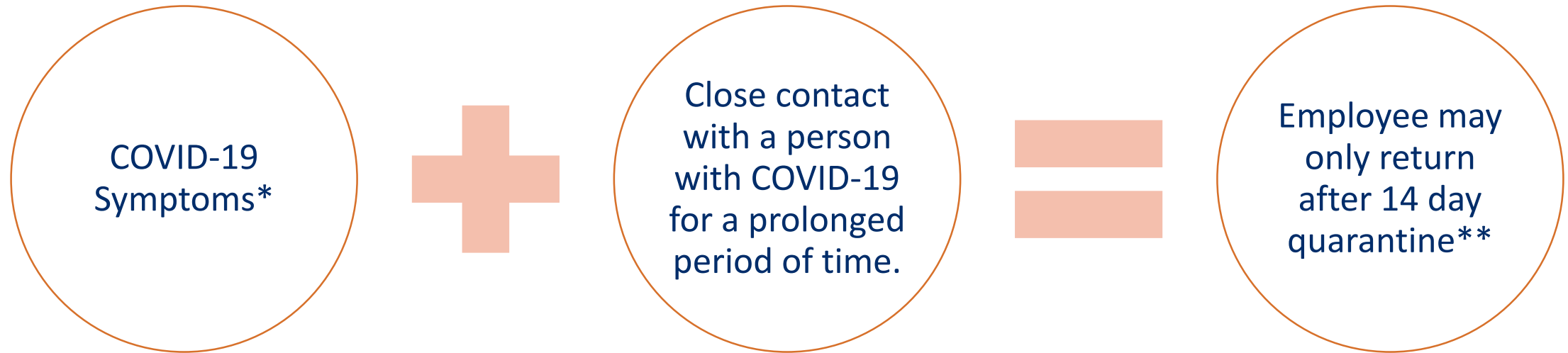
Health Screening: Next Steps



*Guidance requires “Responsible parties must immediately notify the local health department and DOH about the suspected case. Responsible parties should provide the employee with information on healthcare and testing resources.”

** CDC requires employee to be fever-free for at least 3 consecutive days with no fever reducing medicine and other symptoms have improved. <https://www.cdc.gov/coronavirus/2019-ncov/if-you-are-sick/steps-when-sick.html>

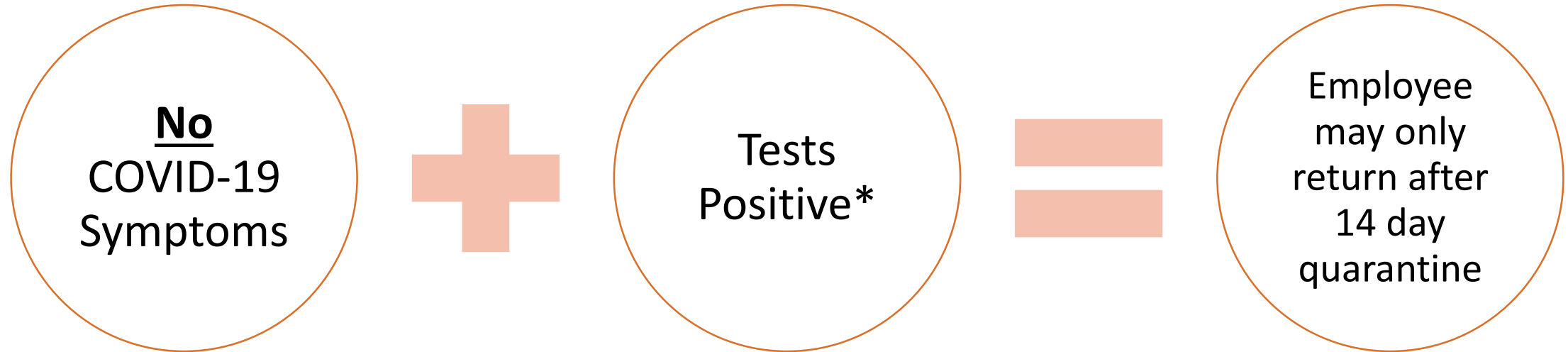
Health Screening: Next Steps



*Guidance requires “Responsible parties must immediately notify the local health department and DOH about the suspected case. Responsible parties should provide the employee with information on healthcare and testing resources.”

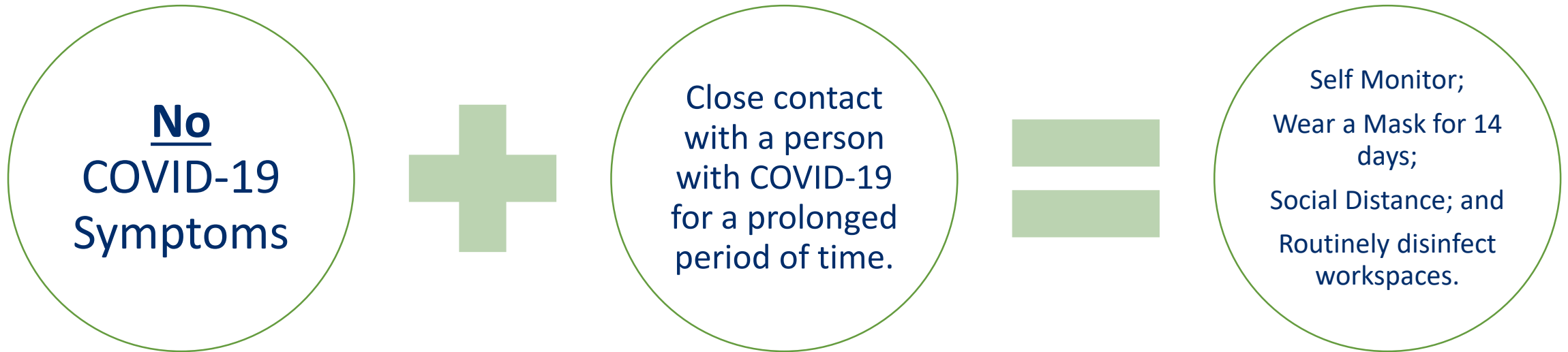
** CDC requires employee to be fever-free for at least 3 consecutive days with no fever reducing medicine and other symptoms have improved. <https://www.cdc.gov/coronavirus/2019-ncov/if-you-are-sick/steps-when-sick.html>

Health Screening: Next Steps



*“Responsible parties must immediately notify the local health department and DOH about the suspected case. Responsible parties should provide the employee with information on healthcare and testing resources.”

Health Screening: Next Steps



Additional Questions

Domenique Camacho Moran, Partner
Farrell Fritz, P.C.
dmoran@farrellfritz.com